

P

Time	Distance
0	0
1	40
2	40
3	40
4	20
5	0

R

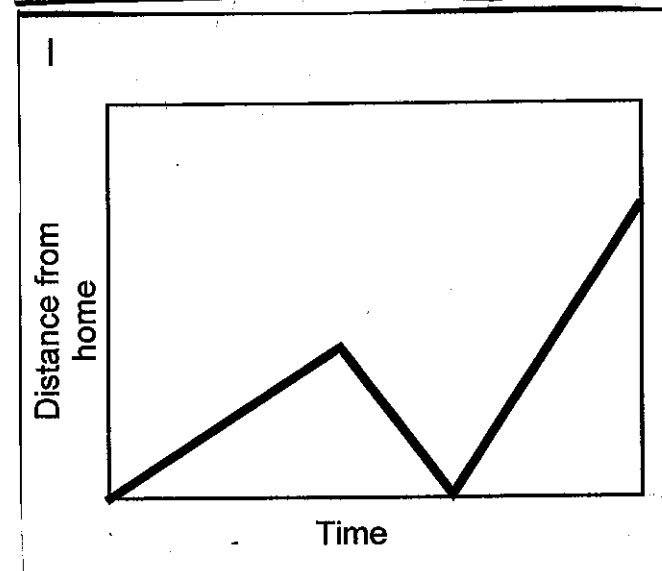
Time	Distance
0	0
1	18
2	36
3	54
3	84
5	120

U

Time	Distance
0	0
1	30
2	60
3	0
4	60
5	120

W

Time	Distance
0	0
1	45
2	80
3	105
4	120
5	125



5 Tom left his home for a run, but he was unfit and gradually came to a stop!

7 Tom went out for a walk with some friends. He suddenly realized he had left his wallet behind. He ran home to get it and then had to run to catch up with the others.

1 Tom ran from his home to the bus stop and waited. He realized that he had missed the bus so he walked home.

8 This graph is just plain wrong. How can Tom be in two places at once?

CARD MATCHING – Distance-Time Graphs, Stories, and Tables

*Find the 4 sets of 3 cards (one graph, one story, and one table in each) that go together. Record the letters for the set, then cut it out put it on this sheet. Next, **explain how you know** that set goes together. You can draw/write on the graph, mention specific parts of the story, talk about general graph shape, how speeds within a story relate to each other, etc.*

Match 1: _____, _____, _____
(graph) (story) (table)

V Place Cards Below V
V V

Explanation:

Match 2: _____, _____, _____
(graph) (story) (table)

V Place Cards Below V
V V

Explanation:

Name _____
Date _____ Block _____

Match 3: _____ , _____ , _____
(graph) (story) (table)

V Place Cards Below V
V V

Explanation:

Match 4: _____ , _____ , _____
(graph) (story) (table)

V Place Cards Below V
V V

Explanation: